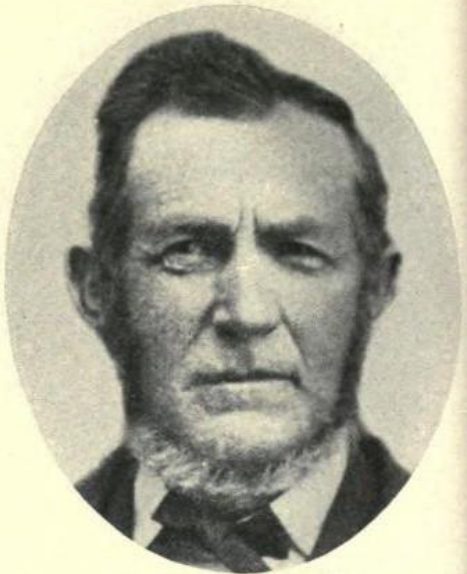


OF UTAH—1868



THOMAS COOK

Born at Collingbourne, Eng. Came to Utah  
Sept. 15, 1868, John Gillespie Oxteam Com-  
pany. Seventy. Farmer; Contractor;  
Brickmaker.

## *Thomas Cook and Family* *- Utah Pioneers*

Pioneers are those men and women who came to Utah by Wagon, hand cart, or afoot, between July 24 1847, and December 30 1868, before the Railroad.

### **1851 Census, England, Collingbourne Ducis:-**

Azarius Cook, head, 53, ag. Lab, Mary cook, wife, 51, **Thomas Cook, 23, ag. Lab, son**, George Cook, 21, ag. Lab, son, Azarius Cook, 19, son, ag lab, Jane Cook, 17, daughter, John Cook, son, 15, ag lab, Charles Cook, 14, son, ag lab, Harriet Cook, daughter, 13, Mary Ann Cook, 11, daughter. The children were all born at Collingbourne Ducis.

### **1861 census, England Collingbourne Kingston, at Cadley Street:-**

Thomas Cook, 33, Head, Woodman, born at Collingbourne, Joyce Cook, 30, wife, Ellen Cook, 7, daughter, Charles Cook, 5, son, George Cook, 3, son and Emily E. Cook, 2, daughter. Joyce Cook, (maiden name Collins) died at Collingbourne on 5<sup>th</sup> July 1866, and she was buried at St Mary's cemetery, Collingbourne Kingston.

Joyce's parents, John and Priscilla Collins and their family traveled to Utah in 1866, taking with them Thomas and Joyce's son George Cook.

Two years later, Thomas Cook and his family made the same journey to join them.

### **Thomas Cook**

Son of Azarias and Mary Cook, of Wiltshire, England. Born at Collingbourne, England. Came to Utah, September 15, 1868, John Gillespie oxteam company.

Married Joyce Collins, 1853, at Collingbourne (daughter of John Collins and Priscilla Shepperd of Collingbourne, pioneers October 1, 1866, Joseph Rawlins oxteam company) She was born February 8, 1830

**Their children:**

Ellen, married Joel A. Johnson; Charles, married Hannah Allen; George E., married Mary Ann Stradling; Emily Elizabeth, 1. married George B. Peay; 2. married David S. Kling; John; Sarah Ann; Mary Priscilla, latter three died.

Family home Provo, Utah.

Seventy; block teacher; member ward building committee. Farmer; contractor; brickmaker. Died September 10, 1890, Provo, Utah.

**Pioneers and Prominent Men of Utah, by Frank Ellwood, published 1913**

Thomas Cook and his family are listed in the individuals who travelled in the John Gillespie company 1868, to make the journey to Utah:

Thomas Cook, 40, b 4 Aug 1827, d. unknown.

Ellen Cook, 14, b. 8 Mar 1854, d 21 Apr 1914.

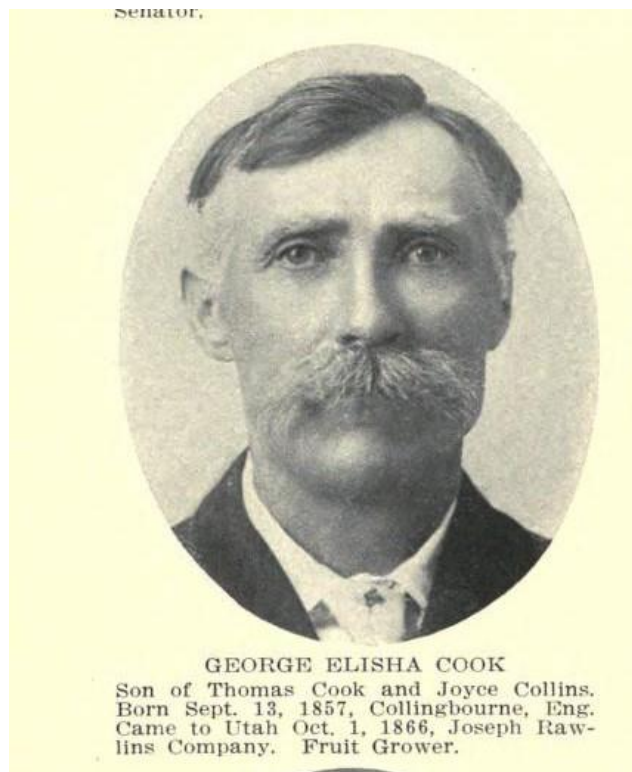
Emily Elizabeth Cook, 9, b 18 June 1859, d. 19 Aug 1934

**A Summary of the Journey**

John Gillespie captained a company of emigrants comprised of about 500 people in 54 wagons. Gillespie, who was from Tooele, left Salt Lake on June 18 with a contingent of out-and-back teamsters to assist the emigrants. They reached the end-of-track terminus at Benton, Wyoming, before late July. Most of the emigrants who joined his company had crossed the Atlantic Ocean on the ship Constitution. That ship reached New York on August 6, and the emigrants left the next day on the Hudson River Railroad for the West. They traveled on trains (including cattle cars on some stretches of track) through Albany, New York, crossing into Canada and past Niagara Falls, Detroit, Chicago, and arriving in Omaha, Nebraska, on August 13. They reached Benton on August 16 and found Gillespie's teamsters and wagons waiting for them. The company's departure was delayed waiting for luggage, so they left Benton on August 24. Some of the wagons traveling with the company carried merchandise and freight destined for stores in Salt Lake City. They traveled in a northwesterly direction from Benton through Whiskey Gap and northward from there until they reached the Sweetwater River and joined the old emigrant road 10 miles west of Devil's Gate. Upon reaching Echo Canyon, many of the men left the company to work on the railroad. A portion of the company traveled ahead and arrived in Salt Lake on September 3. The majority of the company entered the valley via Parley's Canyon and arrived in Salt Lake on September 15. There were 6 deaths.

**Latter Day Saints – John Gillespie Company**

Thomas and Joyce's son, George Elisha Cook was also included in the Book of Utah Pioneers:



**George Elisha Cook**

(Son of Thomas Cook and Joyce Collins). Born September 13, 1857, Collingbourne, England. Came to Utah, October 15, 1866, Joseph Rawlins company.

Married Mary Ann Stradling May 1, 1879, Salt Lake City (daughter of William Stradling and Sophia Bush, of Provo, Utah, pioneers 1866, Captain Royslance company). She was born July 11, 1857.

Their adopted child:

Joseph P. born April 28, 1900.

Family home Provo, Utah.

Missionary to St. Johns, Arizona, 1880-90; Sunday school teacher. Policeman at Provo. Farmer and fruitgrower.

**Pioneers and Prominent Men of Utah, by Frank Ellwood, published 1913**

George Elisha Cook died April 22 1930 at Provo, Utah, aged 72. Date of birth, Sept 13 1857. Occupation – farming. He had lived in Provo 62 years.

**Source: Death Certificate.**